



STATE OF VERMONT
OFFICE OF LEGISLATIVE COUNCIL

Witness Information

Handouts

Please make sure to put a title, date, and your name on the top of each document submitted for testimony.

Electronic copies of handouts must be emailed to Demis Martin, Committee Assistant, at demis@leg.state.vt.us at least 24 hours before your scheduled time. In addition, please also bring five hard copies of your handout and give those copies to Demis prior to testifying.

If you want copies made at the State House, there is a charge of \$.10 per printed side. State employees can use transfer numbers to pay for copies made at the State House. Any document you hand out to the committees is by law available to the public.

ATTENTION - With few exceptions, any document a witness submits to a committee or to a committee assistant is open to the public.

In addition, a witness's submission of a document authored by the witness or his or her organization constitutes consent to its posting on the committee's webpage unless the witness specifically requests that the document not be posted. Although the committee will honor requests not to post such documents on its webpage, once a witness submits a document to the committee, it is a public record and will be subject to public inspection and copying unless exempt under the Public Records Act.

The committee's information page is available at this url:
<https://legislature.vermont.gov/committee/detail/2020/15>

The agendas for committees are updated continually. You can check all agendas at:
<https://legislature.vermont.gov/committee/meetings/2020>

Equipment

If you require any special equipment or resources for your testimony, please notify the committee assistant as early as possible so that arrangements can be made.

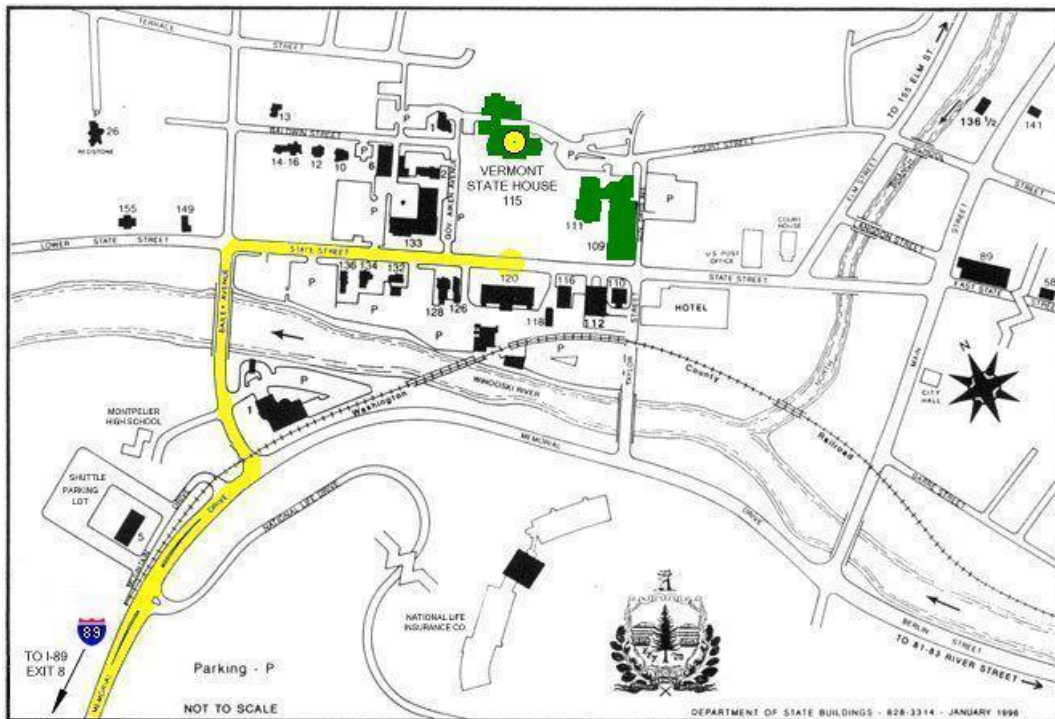
Phone testimony

If you have been approved to testify by phone, please provide the committee assistant with a working phone number at least 24 hours before your scheduled testimony time. The committee assistant will test this phone number to ensure connectivity. The committee will call you when ready.

Driving Directions
115 State Street
Montpelier, VT 05641

From I-89:

- 1: Take EXIT 8 toward US-2/Montpelier/ VT-12/St. Johnsbury 0.5 miles
 - 2: Merge onto Memorial Dr. 0.7 miles
 - 3: Turn LEFT onto US-2/Bailey Ave. 0.1 miles
 - 4: Turn RIGHT onto State Street/US-2 BR/Theodore Roosevelt Hwy. 0.2 miles
- Vermont State House, 115 State Street (on left) 0.2 miles

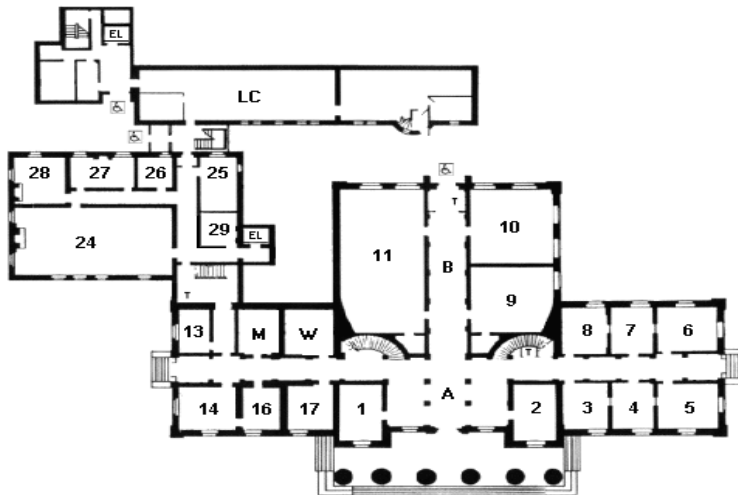


Parking is challenging during the legislative session. You can park on Montpelier streets for up to 2 hours at parking spaces that require quarters, dimes, nickels, or a credit or debit card. There is a shuttle that runs from the parking lot shown in the lower left-hand corner of the map above and also from National Life. The shuttle is free; schedules for the two routes are available online:

<https://ridegmt.com/wp-content/uploads/88.pdf>


House Committee on Health Care is in Room 45, third floor.

Floor 1 (Entrance Floor)

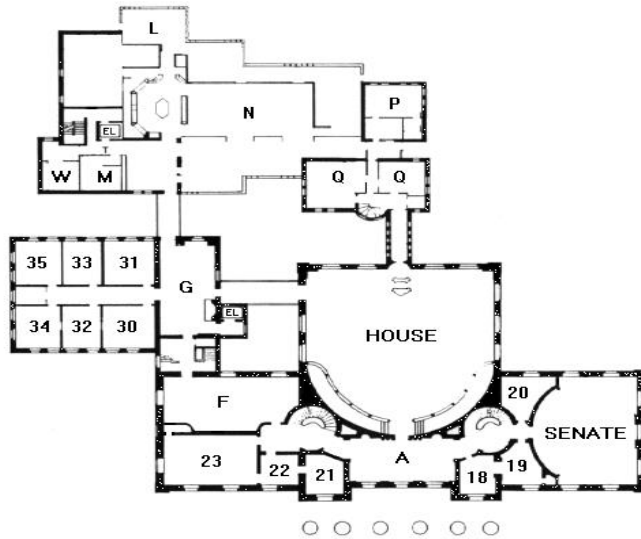


ROOM

KEY

| | |
|---|---|
| 1 | Senate Committee on Judiciary Committee |
| 2 | Sergeant at Arms |
| 3 | Senate Committee on Transportation |
| 4 | Senate Committee on Government Operations |
| 5 | Senate Committee on Appropriations |
| 6 | Senate Committee on Finance |
| 7 | Senate Committee on Institutions |
| 8 | Senate Committee on Natural Resources and Energy |
| 9 | Coatroom |
| 10 | Small Hearing Room |
| 11 | Large Hearing Room |
| 13 | President Pro Tempore of the Senate |
| 14 | Lt. Governor (President of the Senate) |
| 16 | Lt. Governor's Staff |
| 17 | Senate Committee on Health and Welfare |
| 24 | Legislative Lounge (Old Supreme Court Chamber) |
| 25 | Copy Center |
| 26 | Senate Committee on Agriculture |
| 27 | Senate Committee on Economic Development, Housing and General Affairs |
| 28 | Senate Committee on Education |
| 29 | Capitol Police |
| A | Lobby |
| B | Hall of Inscriptions (Lincoln Statue) |
| LC | Legislative Council |
| T | Public Telephones |
| M & W | Rest Rooms |
| EL | Elevator |
|  | Accessible Entrances |

Floor 2

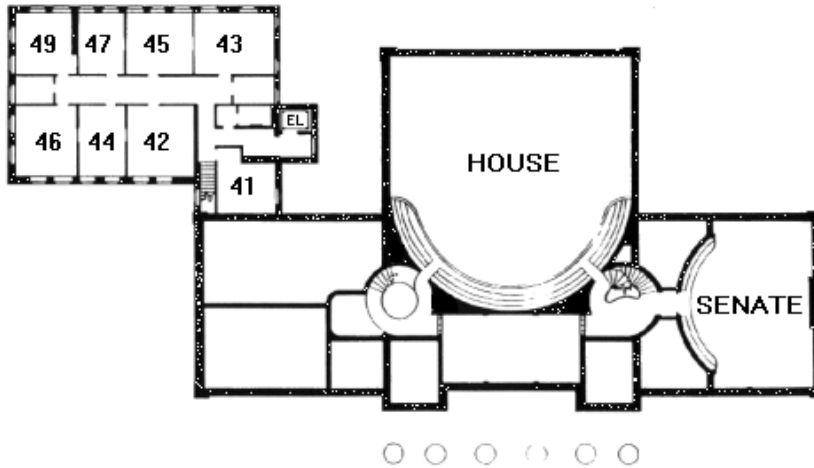


ROOM

KEY

| | |
|--------|--|
| House | House Chamber |
| Senate | Senate Chamber |
| 18 | Secretary of the Senate |
| 19 | Secretary of the Senate |
| 20 | Senate Coatroom |
| 21 | Governor's Staff |
| 22 | Governor's Staff |
| 23 | Governor's Office |
| 30 | House Committee on Judiciary |
| 31 | House Committee on Education |
| 32 | House Committee on Agriculture and Forestry |
| 33 | House Committee on Corrections and Institutions |
| 34 | House Ways and Means Committee |
| 35 | House Committee on Commerce and Economic Development |
| A | House Vestibule (Hall of the Flags) |
| F | Cedar Creek Room |
| L | Ethan Allen Room – House Committee on Natural Resources, Fish, and Wildlife |
| N | State House Food Court (Abbey Group) |
| P | Speaker of the House |
| Q | Clerk of the House |
| T | Public Telephones |
| M & W | Rest Rooms |
| EL | Elevator |

Floor 3



ROOM

41
42
43
44
45
46
47
49
HOUSE
SENATE
EL

KEY

House Committee on Energy and Technology
House Committee on Appropriations
House Committee on Transportation
House Committee on General, Housing, and Military Affairs
House Committee on Health Care
House Committee on Human Services
House Committee on Government Operations
House Chamber Balcony
Senate Chamber Balcony
Elevator

There is a coat room near the Sergeant at Arms' Office in the center of the main floor. You can store outerwear there.

Occasionally, we must cancel hearings. We will attempt to notify you as soon as we hear of cancellations or postponements.

If the weather is bad, you may be able to testify by phone rather than chance dangerous driving conditions, please check with the person listed below.

If you have further questions, please contact Demis Martin at demis@leg.state.vt.us or (802) 828-2264.